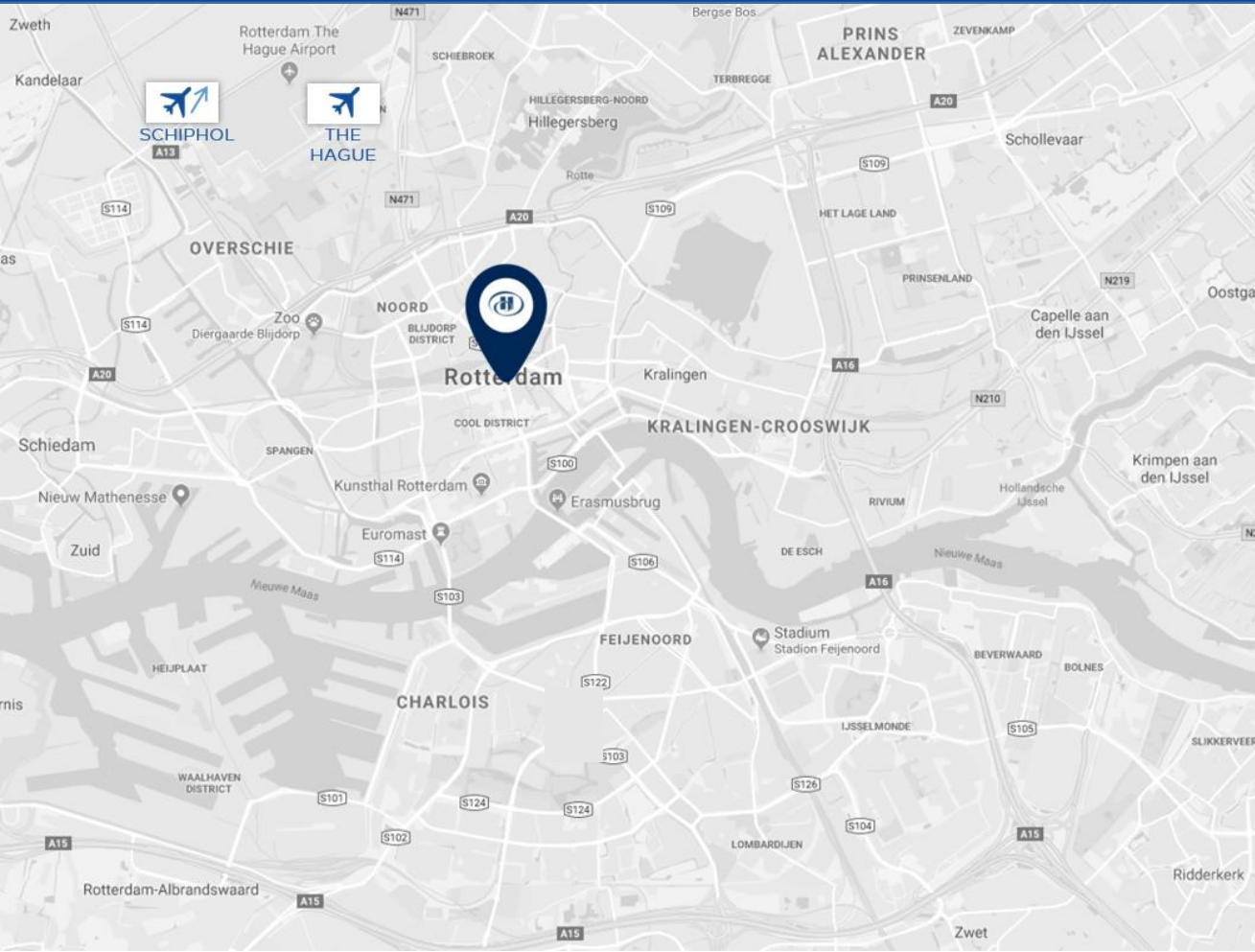


HILTON Rotterdam



LOCATION, LOCATION, LOCATION

ROTTERDAM, THE NETHERLANDS



- Rotterdam is in the Rough Guide, Top 10 cities to visit in 2015 and in the Top 5 Best in Travel, Lonely Planet.
- Rotterdam is the **2nd largest city** of the Netherlands with 600,000 inhabitants and excellent accessibility by air, rail and road
- **Rotterdam -The Hague airport** is just 15 minutes drive from the city centre, **45 minutes from Amsterdam Airport Schiphol** and **25 minutes** with the high-speed train
- **Hi-speed road connects** Rotterdam to Amsterdam (NL), Antwerp (BE), Brussels (BE), and Paris (FR)
- Rotterdam is in the **top 3 Best Congress city of The Netherlands** according to the ICCA (International Congress & Convention Association)

POSITIONING

We're Rotterdam's Beating Heart!

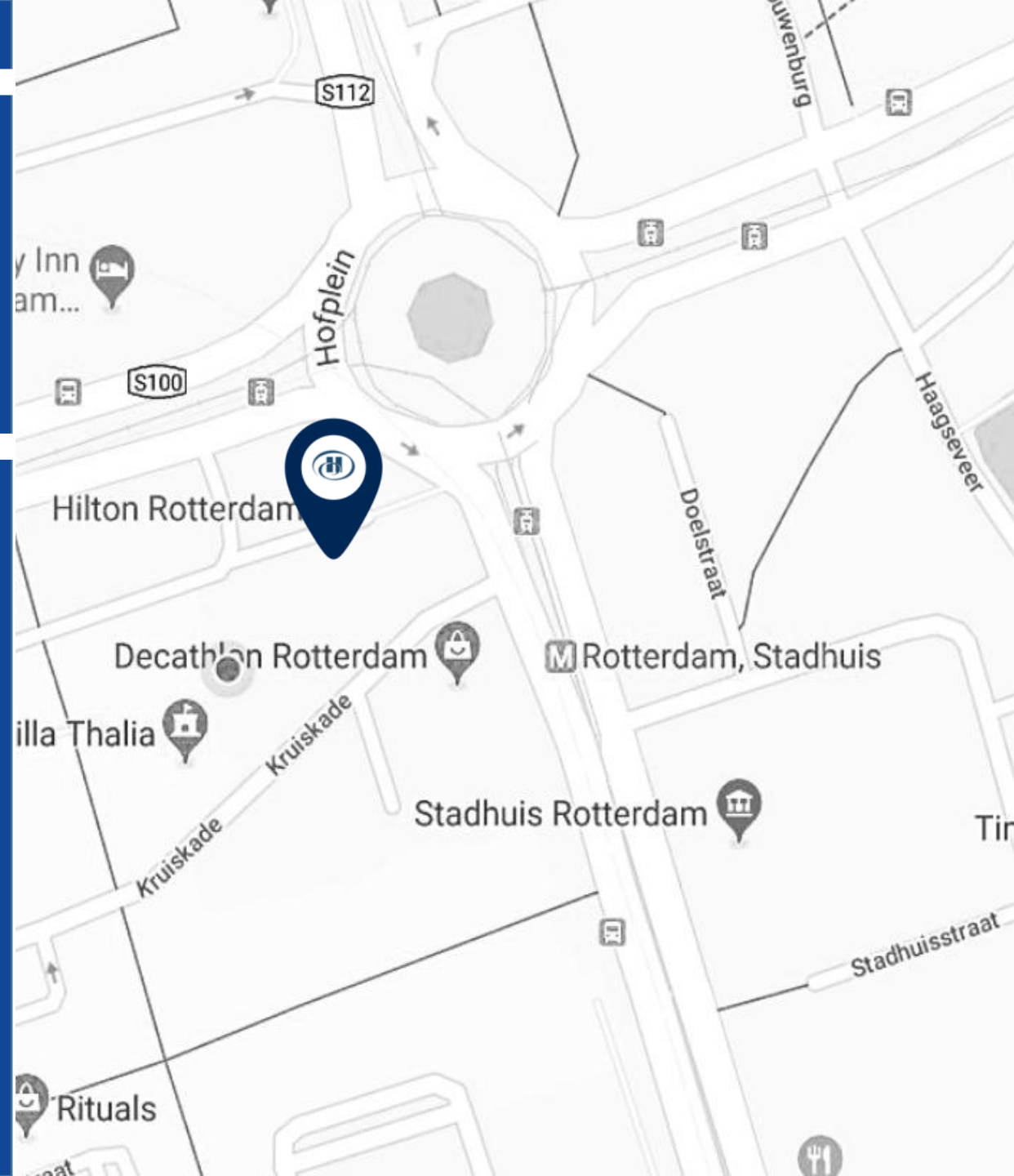
Hilton Rotterdam is a sophisticated city hotel, the perfect venue for business, leisure and corporate travelers seeking a contemporary sanctuary in the heart of the city,

Ideally located at the Kruiskade, in the main business, shopping and nightlife district

Completely renovated in 2013 featuring the latest technology and stylish design

Dedicated meeting floor with multiple break-out options

Hotel partner of Eurovision Songfestival 2020, Diergaarde Blijdorp & International film festival Rotterdam



HOTEL FACILITIES

HILTON ROTTERDAM



HOTEL FACILITIES & SERVICES

AT A GLANCE

- 254 Rooms & Suites
- Executive Lounge with complimentary drinks, bites and breakfast
- Presidential Suite for VIP guests and long stay guests
- Free WiFi
- Dedicated meeting floor with 7 flexible function rooms and conference lobby for maximum of 350 guests
- Restaurant JAQ, serving an ALL-DAY menu
- 24 hour fitness room featuring state-of-the-art equipment, internet, Spotify (internet connection)
- Valet parking with underground car park and next door parking garage with 270 parking space
- Cocktailbar HUGH
- Restaurant Joelia* by Mario, One Michelin star



THE *Lobby* IS BRIGHT, WARM & DECORATED WITH TASTE



THE *Executive lounge* IS A PLACE TO RELAX WITH
BREAKFAST AND COMPLIMENTARY DRINKS & BITES

24-HOUR *fitness room* FEATURING
STATE-OF-THE-ART EQUIPMENT



ACCOMODATION

HILTON ROTTERDAM

254 ROOMS AND SUITES



ACCOMMODATION

254 Rooms & Suites

- Hilton Guestroom 140
- Hilton Guestroom High Floor 28
- Hilton Executive Room 55
- King Junior Suite 23
- King Executive Suite 7
- Presidential Suite 1

In-room facilities

- High quality design and individual climate control
- Full LED flatscreen HD TV
- Spacious design bathroom with bath or walk-in shower
- **Executive rooms & Suites** have a Nespresso machine, rain shower in the bathroom and access to Executive Lounge



TWIN GUESTROOM

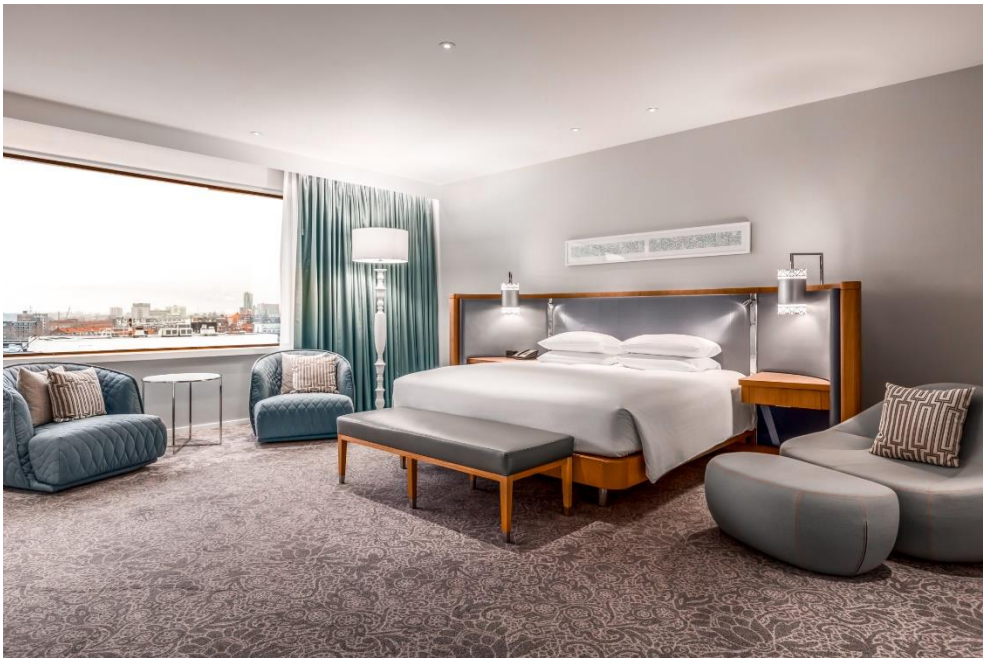


KING GUESTROOM



KING EXECUTIVE





CONFERENCE & EVENTS

HILTON ROTTERDAM

CONFERENCE & EVENTS

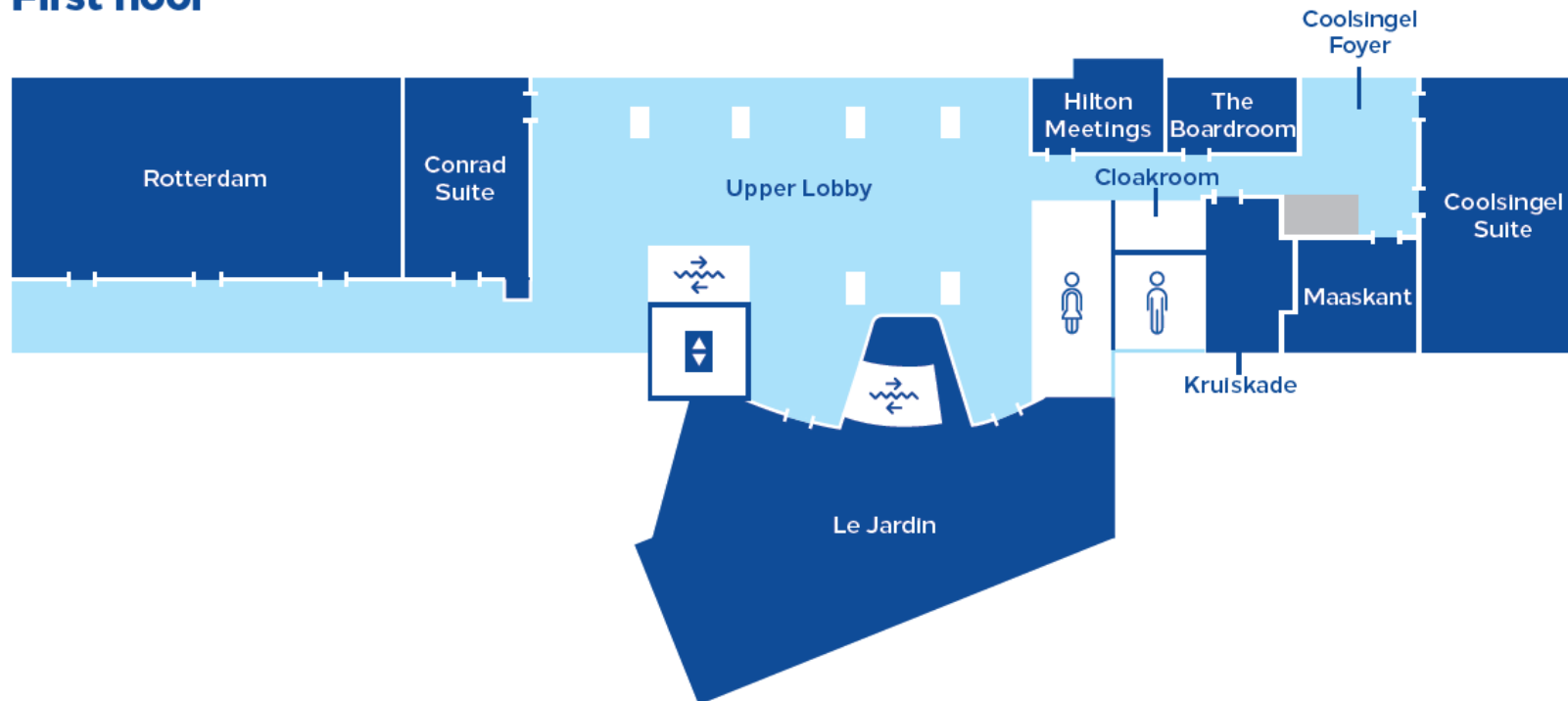
AT A GLANCE

- Dedicated meeting floor of 3,500 m² with multiple break-out areas and fully equipped connectivity station
- 2 board rooms and 5 flexible function rooms all with natural daylight and equipped with projector, screen and sound system
- Coolsingel Suite with 180° view on Rotterdam's vibrant city center
- Light and modern Upper Lobby exceptionally suited for receptions and exhibitions
- Maximum events capacity of 350 guests with a total Meet/Eat/Sleep capacity group ceiling of 200 rooms
- Dedicated Meeting & Events coordinator for assistance during your meeting or event

Conference And Event Rooms Capacity Chart

Name	Location	Area (Sq. M)	Length (M)	Width (M)	Height (M)	Theatre	Classroom	Cabaret Round Tables	U-Shape	Reception	Boardroom	Cabaret Half Moon Tables	Carre	Banquet
Le Jardin	Upper Lobby	393	29	15	3.75	325	186	200	51	350	60	200	60	250
Upper Lobby	Upper Lobby	490	42	15	3.5	-	-	-	-	350	-	-	-	-
Rotterdam	Upper Lobby	288	24	12	3.5	325	150	160	72	350	80	200	80	180
Conrad Suite	Upper Lobby	96	8	12	3.5	81	54	48	24	120	30	56	30	48
Coolsingel Suite	Upper Lobby	155	16	10	3.4	110	62	48	48	100	61	77	54	90
Maaskant	Upper Lobby	48	8	6	3	41	28	28	20	30	18	35	24	24
Kruiskade	Upper Lobby	36	9	4	3	-	-	-	-	-	20	-	-	-
The Boardroom	Upper Lobby	27	7	4	3	-	-	-	-	-	16	-	-	-

First floor



**BE Inspired WITH A 180° VIEW ON ROTTERDAM
FOR YOUR EVENT IN THE COOLSINGEL SUITE**



The image shows a spacious ballroom with a high ceiling and a grid of recessed lights. The room is filled with round tables covered in white cloths, each surrounded by several chairs. The tables are set with water bottles and glasses. Large windows line the back wall, each featuring a vibrant, abstract glass applique in shades of green, blue, and purple. The floor is covered in a patterned carpet. The overall atmosphere is bright and elegant.

THE Ballroom LE JARDIN

UNIQUE VENUE OFFERING A TIMELESS, BRIGHT DÉCOR WITH ORIGINAL GLASS APPLIQUE WINDOWS FROM 1963

TWO BOARDROOMS, IDEAL FOR
Small meetings AND *Private* SESSIONS



THE UPPER LOBBY WHICH *Connects* **ALL**
MEETING ROOMS AND CAN BE USED AS
AN EXCLUSIVE *Exhibition/ Reception* **AREA**





**share delicious food, made from
honest and excellent produce at Jaq.**



Mario

By Mario. One-Michelin star restaurant



TIWYA

**Indonesian Cuisine, Cocktails,
Restaurant & Bar**

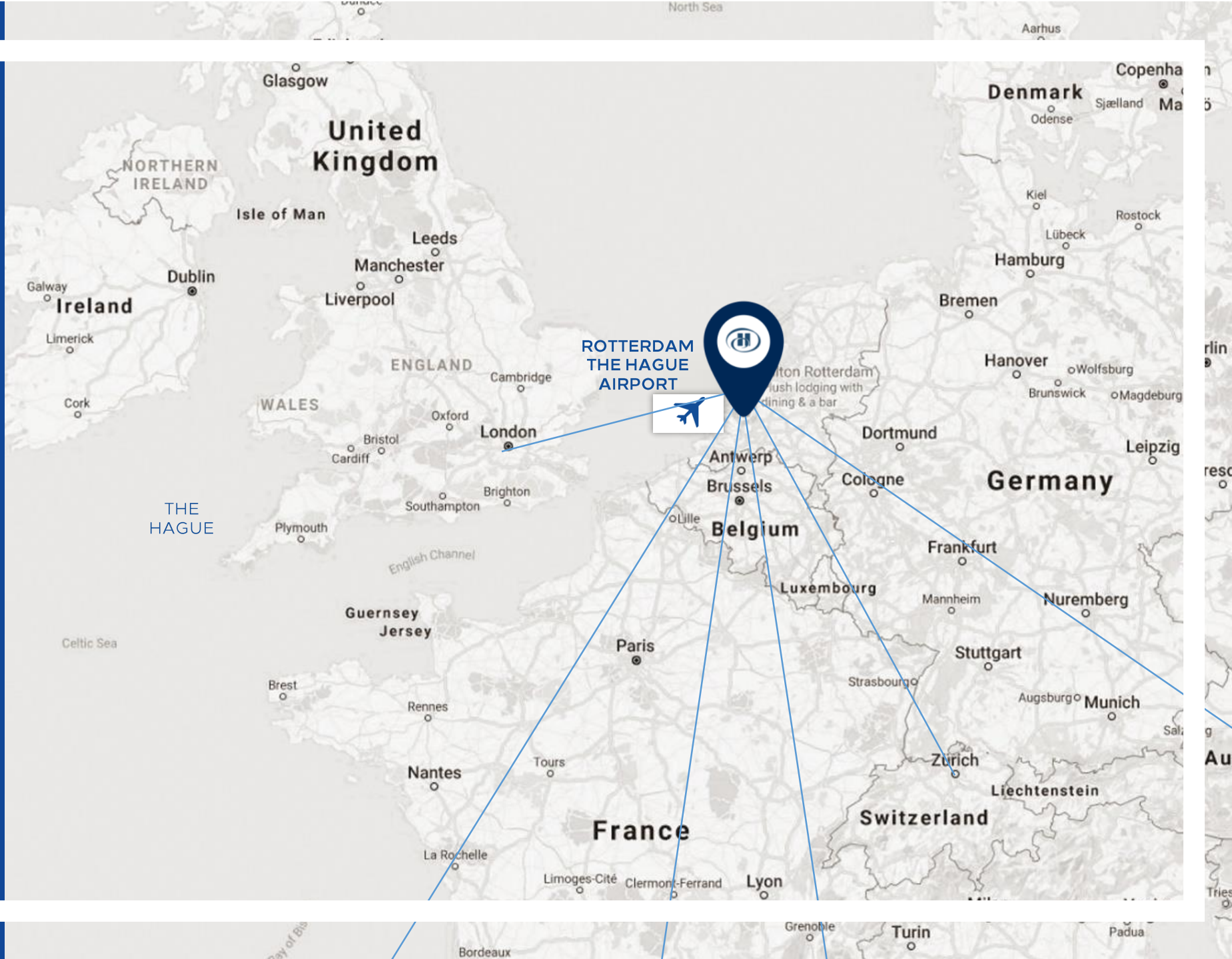
Hilton Rotterdam

 **By Plane**

Access information

To Rotterdam The Hague Airport

London	0h55
Barcelona	2h15
Vienna	2h15
Rome	2h25
Lisbon	2h50
Zurich	3h40



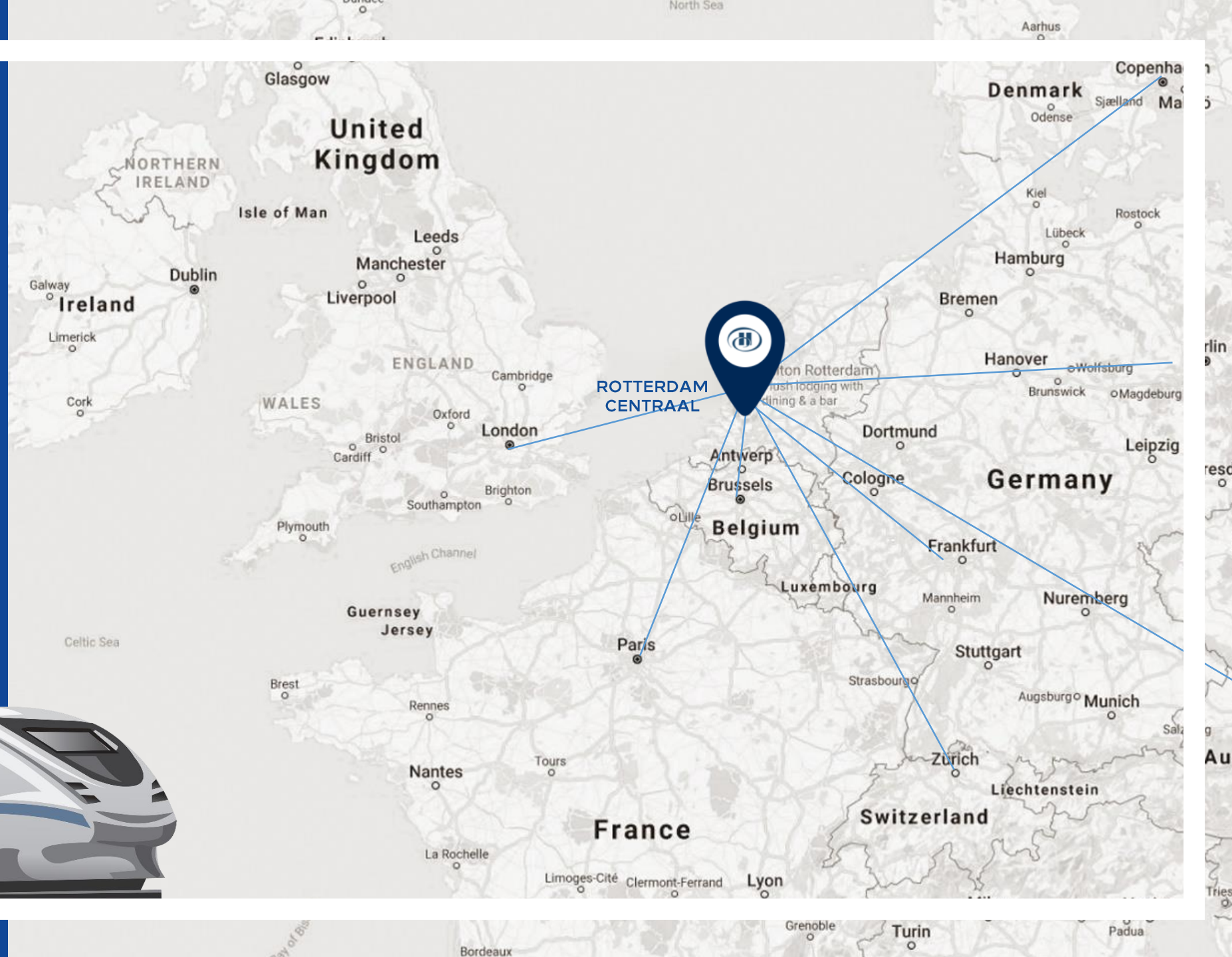
Hilton Rotterdam



Access information

To Rotterdam Centraal Station

Brussels	1h45 SNCB IC
Paris	2h40 Thalys
London	3h59 NS int.
Frankfurt	4h30 ICE int.
Berlin	7h DB
Zurich	9h ICE int.
Vienna	13h IC/Thalys
Copenhagen	15h DSB



CONTACT PERSON *Hilton Rotterdam*

Groups, conference & events team

E: events.rotterdam@hilton.com

T: +31 10 710 8011

Groups, conference & events manager

Mrs. Martha Guarrera

E: martha.guarrera@Hilton.com

T: +31 10 710 8096

Cluster Sales Manager

Mr. Pim van Duin

E: pim.vanduin@hilton.com

M: +31 6 53 83 06 32

T: +31 10 710 8051

Commercial Manager

Mr. Rogier Stolk

E: rogier.stolk@hilton.com

T: +31 6 48 75 85 34

Director of Sales

Mr. Guy Stolk

E: guy.stolk@hilton.com

T: +31 6 20 54 37 01

General Manager

Mrs. Jolijn Zeeuwen

E: jolijn.zeeuwen@hilton.com

T: +31 6 51 22 47 27



Hilton

ROTTERDAM